



Profiles of facilities, staff, volunteers, families and residents in Kentucky's long term care facilities.

Statewide



January 2019

KAHCF/KCAL MEMBERS RACE TO SUCCESS

The Kentucky Association of Health Care Facilities/Kentucky Center for Assisted Living (KAHCF/KCAL) held its Annual Meeting and Expo as attendees gathered to "Race to Success" at the Galt House Hotel in Louisville Nov. 13-15, 2018. More than 700 long-term care providers met during the meeting, energized by general sessions challenging them with strategies to cope with stress on the job, hiring and retaining quality staff, and breakout sessions on a variety of issues facing long-term care providers. On Nov. 15, KCAL held its first KCAL Day for Assisted Living Communities. The week ended with the Annual Quality Awards Banquet where more than 30 facilities were named Best of Kentucky and Top 10 Professional Achievement winners were counted down.

BEST OF KENTUCKY WINNERS



Berea Health and Rehabilitation Facility, Berea



Boyd Nursing and Rehabilitation Center, Ashland



Brandenburg Nursing and Rehabilitation Center, Brandenburg



Carter Nursing and Rehabilitation Center, Grayson



Concordia Nursing and Rehabilitation Center, Greenville



Corbin Health and Rehabilitation Center, Corbin



Crestview Center, Shelbyville



Dawson Springs Health and Rehabilitation Center, Dawson Springs



Former Diversicare of Glasgow, now Barren County Nursing and Rehab, Glasgow

of Long Term Care

BEST OF KENTUCKY WINNERS, CONT.

2018
THE BEST of KENTUCKY
NURSING & REHABILITATION



**Diversicare of Greenville,
Greenville**



**Grand Haven Nursing and
Rehabilitation Center, Cynthiana**



**Highlandspring of Fort Thomas,
Fort Thomas**



Hillside Center, Madisonville



**Kenwood Health and Rehabilitation
Center, Richmond**



**Knott County Health and
Rehabilitation Center, Hindman**



**Landmark of Laurel Creek,
Manchester**



**Letcher Manor Nursing and
Rehabilitation Facility, Whitesburg**



**Masonic Communities of
Shelbyville, Shelbyville**



**Maysville Nursing and
Rehabilitation Facility, Maysville**



**Morganfield Nursing and
Rehabilitation, Morganfield**



Nazareth Home, Louisville



Nazareth Home Clifton, Louisville



Oakmont Manor, Flatwoods



**Redbanks Skilled Nursing Facility,
Henderson**



**Ridgeway Nursing and Rehabilitation
Facility, Owingsville**

BEST OF KENTUCKY WINNERS, CONT.



Rivers Edge Nursing and Rehabilitation Center, Prospect



Rosedale Green, Covington



Salem Springlake Health and Rehabilitation Center, Salem



Superior Care Home Nursing and Rehabilitation, Paducah



The Terrace Nursing and Rehabilitation Facility, Berea



Villaspring of Erlanger, Erlanger



Williamsburg Health and Rehabilitation Center, Williamsburg



Wolfe County Health and Rehabilitation Center, Campton

Caregiver Top 10



Theresa Kyle



Anna Brock



Carol Butler



Jessica Lowe



Betty Jenkins



Cassandra Vinson



Toyya Tipton



Sabrina Lykins-Kash



Selena Prather

Theresa Kyle

Harlan Health and Rehabilitation Center, Harlan
Overall Winner

Anna Brock

Hillcrest Health and Rehabilitation Center, Corbin

Carol Butler

Hazard Health and Rehabilitation Center, Hazard

Jessica Lowe

Hyden Health and Rehabilitation Center, Hyden

Betty Jenkins

Grand Haven Nursing and Rehabilitation Center, Cynthiana

Nancy Hicks

Knott County Health and Rehabilitation Center, Hindman
(no photo)

Cassandra Vinson

Morganfield Nursing and Rehabilitation Center, Morganfield

Toyya Tipton

Crestview Center, Shelbyville

Sabrina Lykins-Kash

Wolfe County Health and Rehabilitation Center, Campton

Selena Prather

Brandenburg Nursing and Rehabilitation Center, Brandenburg

Nursing Care Top 10



Tammy Roberts



Linda Harris



Jessica Klausing



Teresa Mitchell

Tammy Roberts
Masonic Communities of
Shelbyville, Shelbyville
Overall Winner

Niketa Hayden
Mills Health and Rehab
Center, Mayfield
(no photo)

Linda Harris
Harlan Health and
Rehabilitation Center,
Harlan

Jessica Klausing
Nazareth Home-Clifton,
Louisville

Teresa Mitchell
Williamsburg Health and
Rehabilitation Center,
Williamsburg

Lora Caldwell
Hyden Health and
Rehabilitation Center,
Hyden

Danyale Ball
Ridgeway Nursing and
Rehabilitation Facility,
Owingsville

Barbara Collins
Knott County Health and
Rehabilitation Center,
Hindman

Angelia Henson
Hazard Health and
Rehabilitation Center,
Hazard

Diana McDonald
Grand Haven Nursing and
Rehabilitation, Cynthiana



Lora Caldwell



Danyale Ball



Barbara Collins



Angelia Henson



Diana McDonald

Top Supportive Caregivers



Kristy Swafford



Rhonda Freeman



Misty Smallwood



Tiffany Golden

Kristy Swafford
Barbourville Health and
Rehabilitation Center,
Barbourville
Overall Winner

Rhonda Freeman
Harlan Health and
Rehabilitation Center, Harlan

Misty Smallwood
Corbin Health and
Rehabilitation Center, Corbin

Tiffany Golden
Hillcrest Health and
Rehabilitation Center, Corbin

Tina Noe
Williamsburg Health and
Rehabilitation Center,
Williamsburg

Connie Phillips
Morganfield Nursing and
Rehabilitation Center,
Morganfield

Judy Stamper
Wolfe County Health and
Rehabilitation Center,
Hindman

Scotty Caudill
Letcher Manor Nursing
and Rehabilitation Center,
Whitesburg

Billie Mulkey
Boyd Nursing and
Rehabilitation Center,
Ashland

**Anna Windmeyer
Calihua**
Somerset Nursing and
Rehabilitation Facility,
Somerset

Delilah Fore
South Shore Nursing
and Rehabilitation,
South Shore



Tina Noe



Connie Phillips



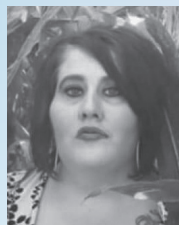
Judy Stamper



Scotty Caudill



Billie Mulkey



**Anna Windmeyer
Calihua**



Delilah Fore

Ira O. Wallace Award

John Dailey, Management Advisors

John Dailey, President of Management Advisors, was the recipient of the 2019 Ira O. Wallace Award. Dailey was honored for his dedication to the long-term care profession, his knowledge in human resources and compliance, his work in revamping the Quality Awards Program while serving as the Association's Public Relations Program and seven years as the Awards Banquet Master of Ceremonies. The Ira O. Wallace award recognizes outstanding leadership and meritorious service to the Association and Kentucky's long-term care profession.



Public Relations



Diversicare of Greenville, Greenville

Wheelchair parade

Staff started planning with residents months ahead to start decorating their wheelchair floats. Their Facebook page drummed up interest in the community for the upcoming event, and local government officials, law enforcement, and volunteers all helped push the residents on streets blocked off as people lined them cheering for their favorite float.



Superior Care Home Nursing and Rehabilitation, Paducah

Life stories

Residents filled out questionnaires, and from those and shared photographs, LifeStory Books were created and presented to residents at a community party. Based on their stories, the Resident Life Coordinator put together a "Memory Lane Museum" that included a 91-year-old high chair and antique accordion. Local news stations and Facebook posts promoted the Museum, but families gave the best reviews, including one daughter who said her mom and family was grateful for the Celebration of Life book her mom received the day before she passed away.

Volunteers

Joan Morrison, Masonic Communities of Shelbyville

Ms. Morrison began volunteering by joining the facility Bell Choir and making daily visits with residents when her husband was at Masonic Communities before her passing last year. She had such a contagious fire in her spirit that residents could not help smiling at her. She said it was because of her faithful canine companion that made the rounds with her. Despite her own life-long ailments, she lived her philosophy till the end of her life: "Always try to stay positive and remember your home is where you make it. If life gives you a mountain, you must keep on keeping on."



Gloria Smith, Landmark of Laurel Creek, Manchester

Ms. Smith has been a resident herself at Laurel Creek three times and been an outpatient therapy patient as well. She takes advantage of her time as a resident to volunteer even more. She has had a tremendous impact on residents' lives through the countless hours of playing Bingo, crafting, working puzzles or singing hymns.

Health Care Partner



Dr. Kari Shields, Medical Director, Carter Nursing and Rehabilitation Center, Grayson



Dr. Bonnie Lazor, Medical Director, Nazareth Home, Louisville



Larry Martin, Consultant Pharmacist, Hyden Health and Rehabilitation Center, Hyden

Leadership



Jackie Blandford Director of Nursing, Redbanks Skilled Nursing Facility, Henderson

Jackie, a 32-year veteran of long-term care, encourages staff to further their education, frequently writing recommendations for scholarships. And since coming to Redbanks, her leadership has helped move the facility from a 1-star facility to a 4-star facility.



Doralyn Warren Director of Nursing, Superior Care Home Nursing and Rehabilitation, Paducah

Doralyn has worked 40 years at Superior Care, and recently implemented 12-hour shifts, rolling out the new approach by calling it "The Dance." Three months in, they are Still Dancing. Residents love having the same care team for their three meals and therapy and staff is revitalized with days off during the week and weekend. They even recruited 16 new employees recently because of the work schedule.

Chairman's Citation

Janet Justice, KAHCF

Janet served as KAHCF's Senior Director of Regulatory Affairs for the last 10 years before retiring in January. Before coming to the Association, she had worked for Senior Care, Health Systems of Kentucky and EPI, serving on various task forces and committees at the state and association level, and also being named the Director of Nursing of the Year. For the last 10 years, she has fielded calls and questions from members on all matters related to regulations and surveys, spending countless hours reading and researching regulations to give us the correct information. Her expertise will be missed by all.



Legislator of the Year



Rep. Steve Riley, Glasgow

KAHCF Board Chair Terry Skaggs, Legislative Committee Chair Jean Wells and KAHCF/KCAL President Betsy Johnson presented Rep. Steve Riley of Glasgow with the Legislator of the Year Award. Rep. Riley was honored for his work in legislation protecting the Certificate of Need process.

Scholarships

Kentucky Health Care Foundation



Cynthia Hamilton
Presidential Scholarship,
Barbourville Health and
Rehabilitation Center,
Barbourville



Angela Smallwood
Ridgeway Nursing and
Rehabilitation Facility,
Owingsville



Heather Renee Smith
Hyden Health and
Rehabilitation Center,
Hyden



Brenda Fambrough
Redbanks Skilled Nursing
Facility,
Henderson



Dona Nation
Masonic Communities
of Shelbyville,
Shelbyville

Ira O. Wallace



Whitney Crabtree
South Shore Nursing and
Rehabilitation, South Shore



The Kentucky Center for Assisted Living (KCAL) held its first KCAL Day during the Annual Meeting. Nearly 50 assisted living providers attended the general session, breakout sessions on marketing and a special luncheon on how KCAL and the National Center for Assisted Living can benefit them.



Kentucky Association of Health Care Facilities
Kentucky Center for Assisted Living
9403 Mill Brook Road • Louisville, KY 40223

KAHCF/KCAL is the trade association that represents
proprietary and non-proprietary long term care
facilities across the Commonwealth.

For more information contact:
KAHCF • www.kahcf.org
502-425-5000 • Fax: 502-425-3431

PRST STD
U.S. Postage
PAID
Louisville, KY
Permit No. 1368



Profiles of facilities, staff, volunteers, families and residents in Kentucky's long term care facilities.



KAHCF PAC PARTY

On Tuesday evening during the Annual Meeting, vendors and attendees gathered for the Third Annual KAHCF PAC Party. Money raised during the event helps support legislators that are supportive of long-term care providers and assisted living communities. Pictured are Jean Wells and Bruce Linder thanking attendees and announcing raffle winners.

2018 KAHCF/KCAL EXPO



The over 700 Annual Meeting attendees and more than 100 vendors made the Annual KAHCF/KCAL Expo a success once again. A stock car was a huge hit with attendees as they made their way through the Expo.

of Long Term Care